

PTViewer Scripiter 1.32 User Manual

- 1 Introduction
 - 1.1 Why choose PTViewer Scripiter
 - 1.2 System requirements
 - 1.3 Installation instruction
 - 1.3.1 For Windows
 - 1.3.2 For Macintosh
 - 1.4 Copyright announcement
- 2 PTViewer Scripiter Components
 - 2.1 Main window
 - 2.2 Toolbar
 - 2.3 Menu
- 3 Customizing Your Style of Viewer
 - 3.1 Load a panorama image
 - 3.2 Set hotspots on panorama image
 - 3.3 Set download waiting image in viewer
 - 3.4 Set navigating toolbar in viewer
 - 3.5 Set other options
 - 3.6 Add sound file to virtual tour
 - 3.7 Export the result files
 - 3.8 Post virtual tour to web
- 4 Troubleshooting and FAQ
- 5 Contact Technical Support

1 Introduction

Thanks for choosing PTViewer Scripter. With the PTViewer Scripter you will be able to easily customize your own style of PTViewer and visually add hotspots with action and sound to your panoramas. The PTViewer is a panorama java applet viewer developed by Prof. Helmut Dersch. PTViewer Scripter was developed by Panorama Technologies. For more information please visit <http://www.easypano.com>.

PTViewer is acknowledged to be one of the best viewers available today. Due to the generous contribution of Professor Helmut Dersch, PTViewer is an open source application. Open source licensing allows his Panorama development tools to be made freely available to the public. However, until PTViewer Scripter was developed, there was no quick and easy way for photographers and others to harness the many features of this well designed and sophisticated panorama viewer.

PTViewer panorama makers need a visual tool to easily adapt the PTViewer to their particular applications. As the manufacturer of Panoweaver and keen users of PTViewer, we have developed a visual editor for scripting the PTViewer. The new **PTViewer Scripter** has arrived.



1.1 Why choose PTViewer Scripter

With PTViewer Scripter, you are able to:

1. Add hotspots to your panoramas. It makes virtual tour assembly easy!
2. Make it your own presentation all the way. Use your own "downloading -- waiting" image and your own progress bar, and set your own navigating toolbar in the PTViewer window.
3. Set up once, then use forever. Once you have set your "download-- waiting" page and navigation toolbar, it is then saved automatically. When you load a new panorama in PTViewer Scripter, the last viewer setting can be used over and over.
4. Post the virtual tour to web easily. The published html page gives the clear instruction about how to post the virtual tour to your web.

PTViewer Scripter is a quick and easy-to-use editing tool for creating virtual tours from PTViewer.

1.2 System requirements

To use the PTViewer Scripter in Windows, you will need:

- Microsoft Windows 9X/NT/2000 OS with Internet Explorer 4.0 or later versions.
- JRE 1.3.1 or later version (Java Runtime Environment). Recommending JRE 1.4.1 which is included in the installation package and installed by default. You may also download JRE 1.4.1 at <http://java.sun.com/j2se/1.4.1/download.html>.
- 30MB or more free hard disk space
- Pentium 200 MHz or faster processor
- 64MB RAM
- Video display capable of 800x600 pixels or higher with 256 colors

To use the PTViewer Scripter in Macintosh, you will need:

- Macintosh OSX or later operating system
- 30M of free hard disk space
- PowerPC G3 -233 MHz or faster processor
- 64M RAM or more
- Video display of 800x600 pixels or higher with 256 colors

1.3 Installation instruction

This section will lead you installing PTViewer Scriptor to your computer, either Windows or Macintosh.

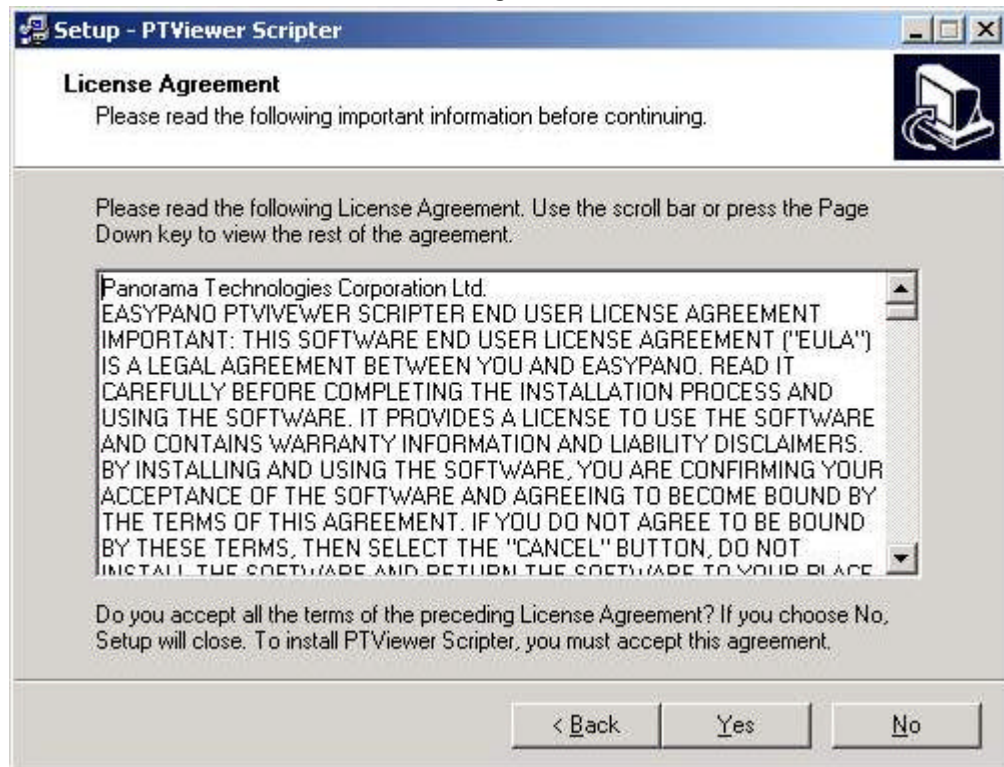
1.3.1 For Windows

This procedure walks you through installing the PTViewer Scriptor to Windows.

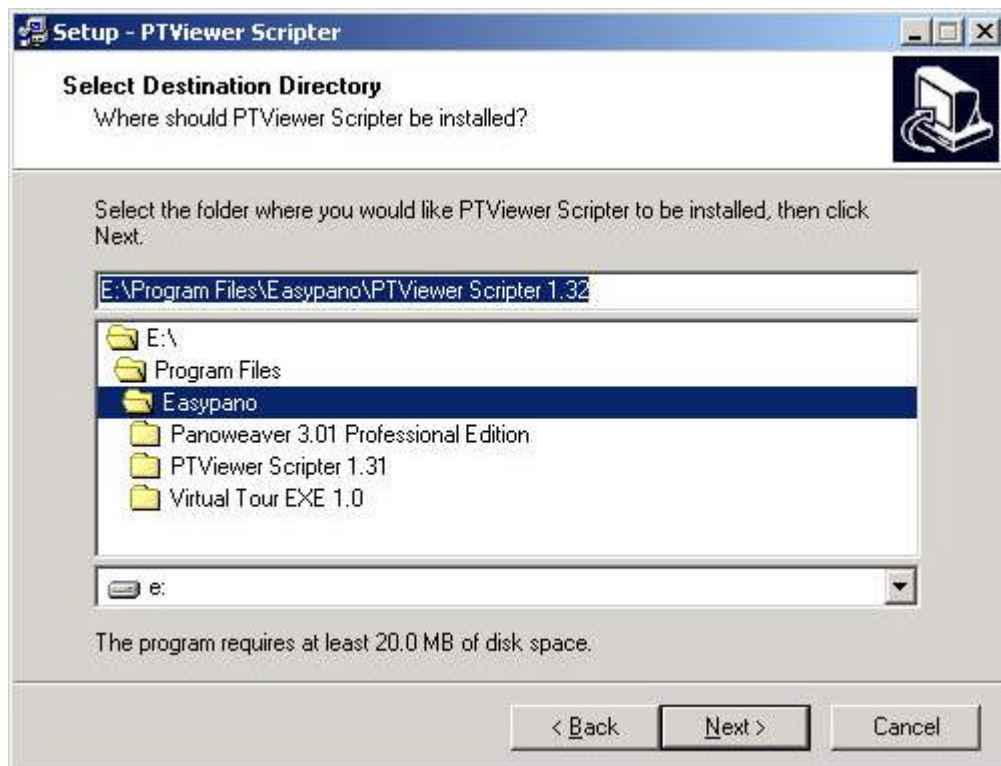
1. Close other running application.
2. Double click the PTViewer Scriptor installation package.



3. Click NEXT on the Welcome screen to go to the license screen.

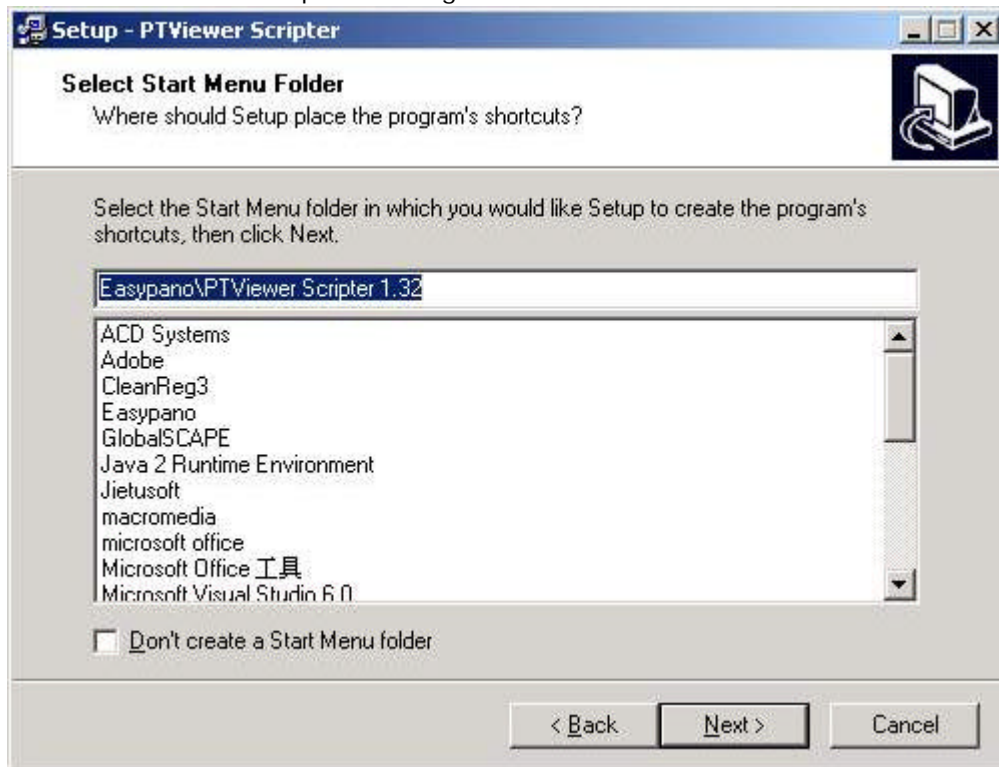


4. Click YES to continue installation.

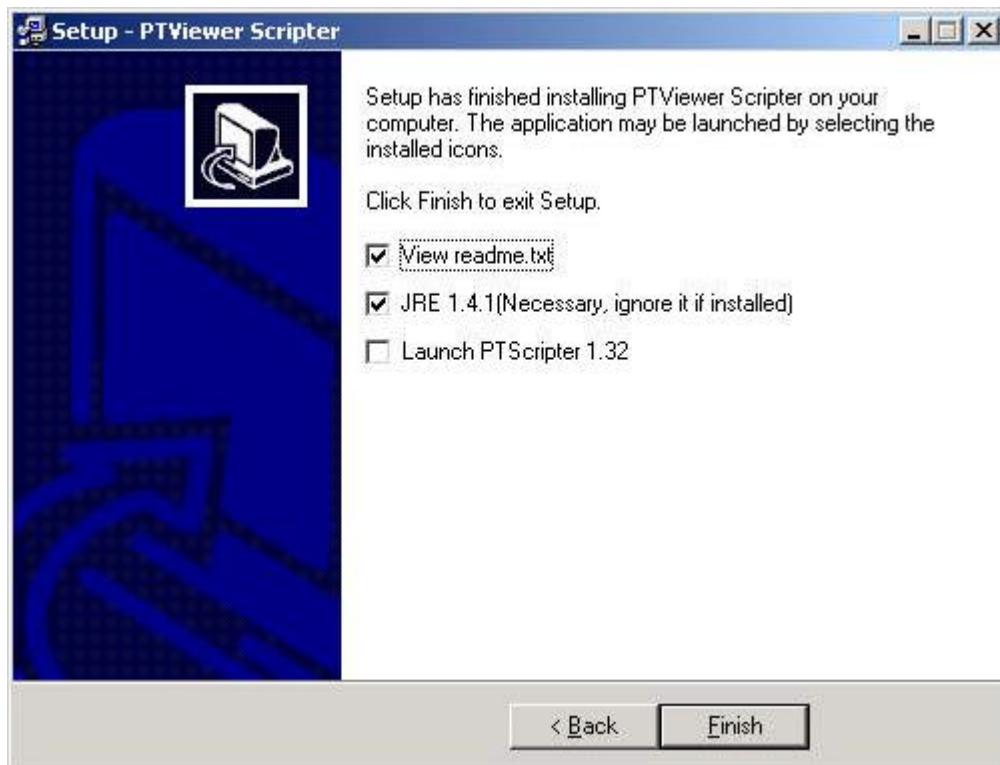



5. Click NEXT on the Select Destination Directory screen to locate the folder where you wish to install the PTViewer Scriper software. Click on the folder,

and click NEXT to set the menu folder and additional tasks, and then click INSTALL. PTViewer Scripter will begin to install now.



6. After reading the information, click FINISH to complete the installation. If you leave the check box marked, PTViewer Scripter will begin to run.



7. If you want to register now, please click "Help"->"Enter License Key". If you are in Windows, use CTRL +C to copy and CTRL+V to paste ; If you are in Mac OS X, use Apple+C to copy and Apple+V to paste. Apple means the key  on the keyboard. If you have not got license key yet, click Buy Now, your Web browser will be launched at the PTViewer Scripser order on line. If you do not wish to register at this time, click Cancel.



The dialog box titled "Register PTViewer Scripser" contains the following text and fields:

Please fill in the User Name and Company/Organization blanks with your name and company name, fill in the Serial Number and License Key with the key pair you received from Easypano, and then click OK to proceed. If you do not have the key pair yet, please click the Buy Now button to make an online purchase. For more information, please visit www.easypano.com.

User Name:

Company/Organization:

Serial Number:

License Key:

Buttons: Buy Now, OK, Cancel

8. After filling in the serial number and license key, you may also register online to get more services which is listed in the "Register Online" window.



The dialog box titled "Register Online" contains the following text and buttons:

Congratulations! You have registered successfully.

You should register online to have all the following services:

1. Free email customer support;
2. Receive the latest information about our products;
3. Download beta versions;
4. Retrieve lost license key;
5. Upgrades or free updates;

To register online, click the "Register Online" button below, otherwise, please click "Register Later". You still have the chance to register online by clicking "Register Online" in the help menu or by visiting <http://www.easypano.com> directly.

Buttons: Register Online, Register Later

To uninstall PTViewer Scripiter, just click the "Start menu"->"Programs"->"PTViewer Scripiter 1.32"->"Uninstall PTViewer Scripiter 1.32".

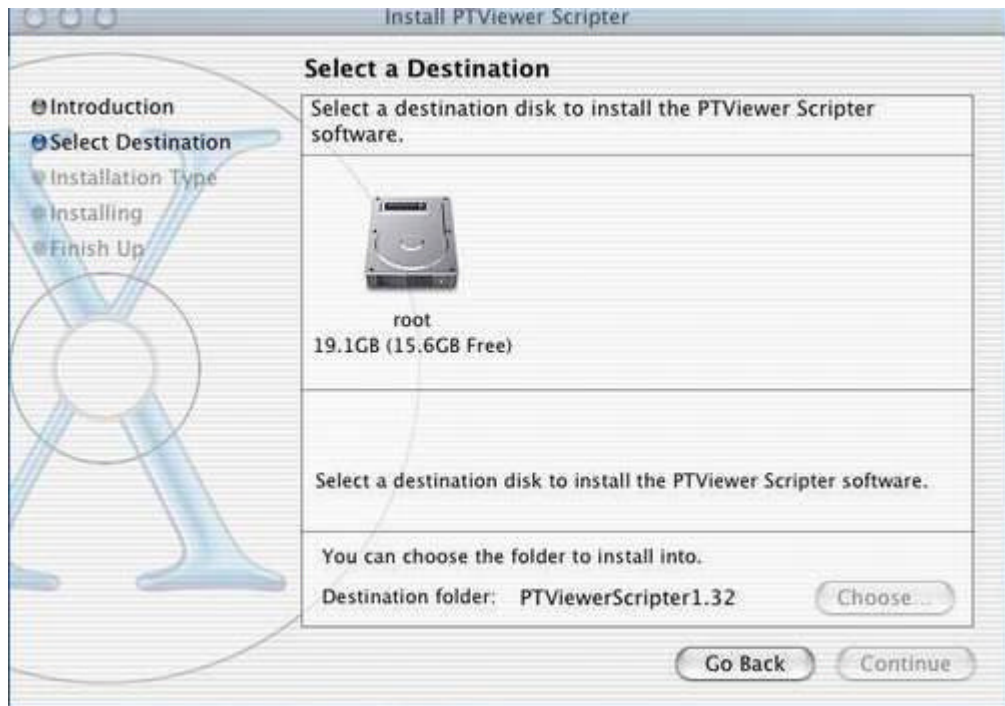
1.3.2 For Macintosh

This procedure walks you through installing the PTViewer Scripiter to Macintosh.

1. Close all other Macintosh applications which are currently running.
2. Double click the Panoweaver installation package to run the installation application, the "Welcome Screen" will appear.



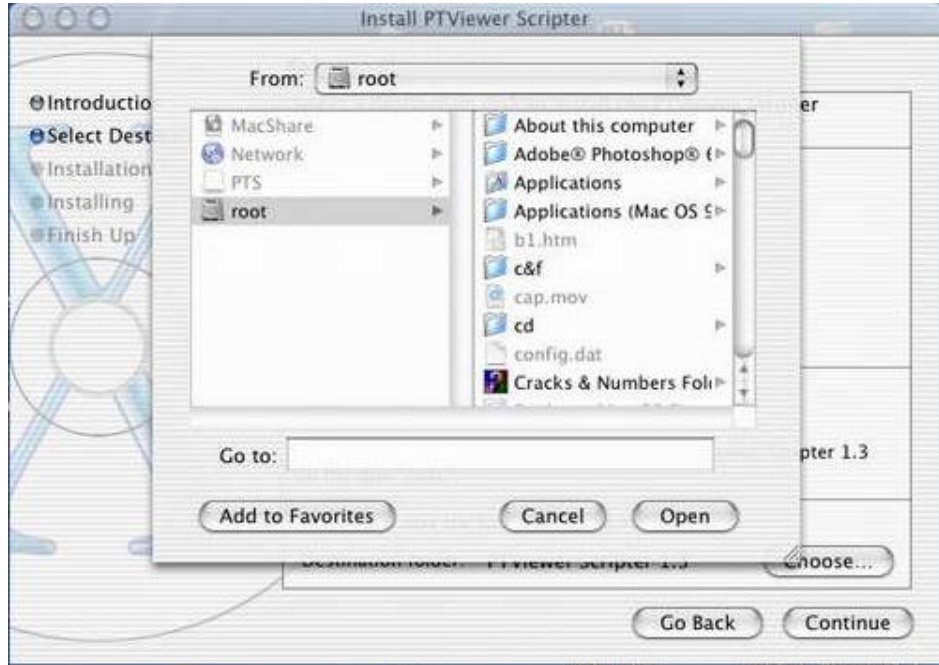
3. Click Continue , the following window appears.



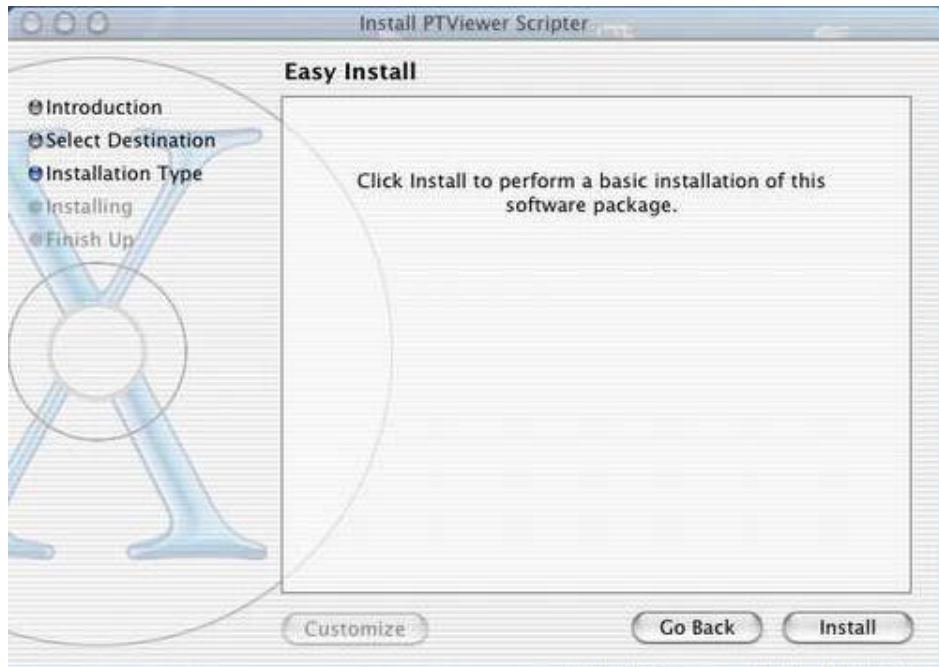
4. Click root, the green arrow key appears soon afterwards. Click it to



5. Click Choose to select the folder where you wish to install Panoweaver , then click Continue.



6. Click Install to start installation.



7. After successfully installing Panoweaver, click Close.



1.4 Copyright announcement

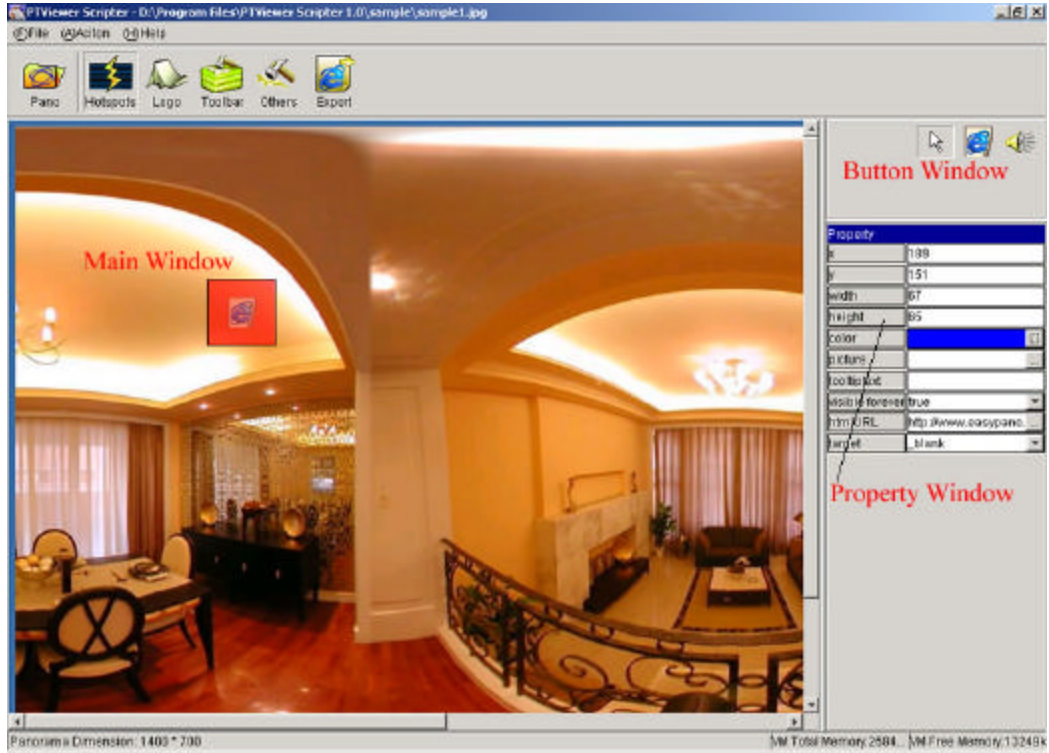
PTViewer Scripter is developed by Panorama Technologies, and the copyright is protected by international laws and agreements. Any company or person, without the permission of Panorama Technologies, can neither copy, modify the software and its packaging, nor can he transfer the software to any other person or company.

PTViewer is a panorama viewer developed by Prof. Helmut Dersch. Java is a registered trademark of Sun Microsystems, Inc. Microsoft, Windows and Internet Explorer are registered trademarks of Microsoft Corporation. Netscape is a registered trademark of Netscape Communications Corporation.

2 PTViewer Scripter Components

PTViewer Scripter has three kinds of component: main window, toolbar and menu.


2.1 Main window



Window	Description
Main Window	Main operational window. Displaying panorama, waiting page and navigating toolbar etc. here
Button Window	Functional buttons list here
Property Window	Displaying Property of window, hotspot and buttons

2.2 Toolbar

Button	Action	Shortcut
	Open a panorama image (*.jpg)	CTRL+O
	Set hotspots on panorama image	CTRL+P
	Set your logo download waiting image in viewer	CTRL+W
	Set navigating toolbar in viewer	CTRL+T
	Set other options like FOV, pan, tilt etc.	CTRL+I

	Export all the result files	CTRL+E
---	-----------------------------	--------

2.3 Menu

This section gives an overview of the menu commands and keyboard shortcuts.

File

Command	Description	Shortcut
Open panorama image	Open a panorama image (*.jpg)	CTRL+O
Save	Save current setting	CTRL+S
Exit	Quit PTViewer Scripiter	

Action

Command	Description	Shortcut
Set hotspots on panorama image	Adding hotspots on loaded panorama image and set the hotspot properties.	CTRL+P
Set download waiting image in viewer	Load your own style of download waiting page (Logo) and downloading progress bar in the viewer	CTRL+W
Set navigating toolbar in viewer	Load your own style of navigating toolbar and assign functions to the buttons on the toolbar	CTRL+T
Set other options	Set other options like FOV, pan, tilt etc.	CTRL+I
Export the result files	Export all the results files	CTRL+E

Help

Command	Description	Shortcut
Help topics	Open help files	F1
Visit www.easypano.com	Visit easypano.com for more information	

Buy now	Buy PTViewer Scripter
Enter license key	Enter the license key to register PTViewer Scripter
Register online	Register PTViewer Scripter online to get more services
About PTViewer Scripter	About PTViewer Scripter

3 Customizing Your Style of Viewer

It takes 6 steps to customize your style of viewer if you use PTViewer Scripter for the first time. However, three of them (step3, 4, 5) can be overlapped if you use PTViewer Scripter for the second time for step3, 4 and 5 can be done once for all.

Before you begin to open PTViewer Scripter, please prepare all the stitched panoramas in JPG format, which can be obtained with Panoweaver or Panotools, a logo image for download waiting page like below:



And a toolbar image with all the functional buttons like below:




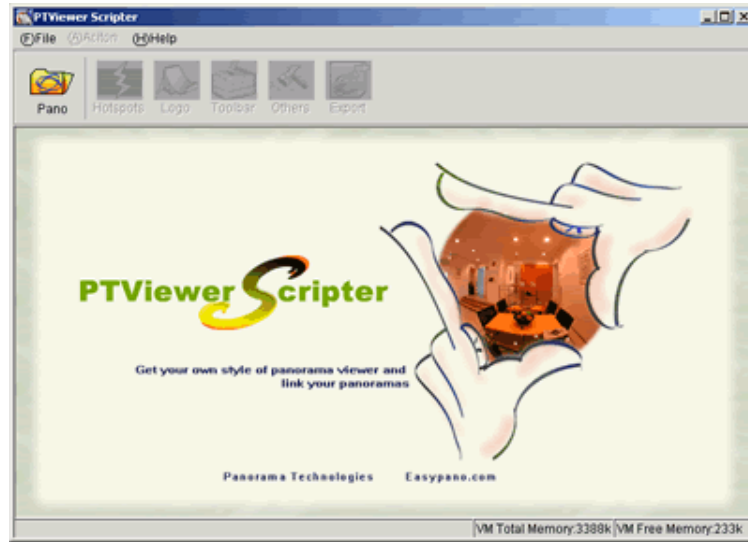
Both the logo and toolbar image can be either JPG or GIF format, but you can only choose GIF format if you want a transparent image.


Now let us begin our visual scripting step by step.

3.1 Load a panorama image



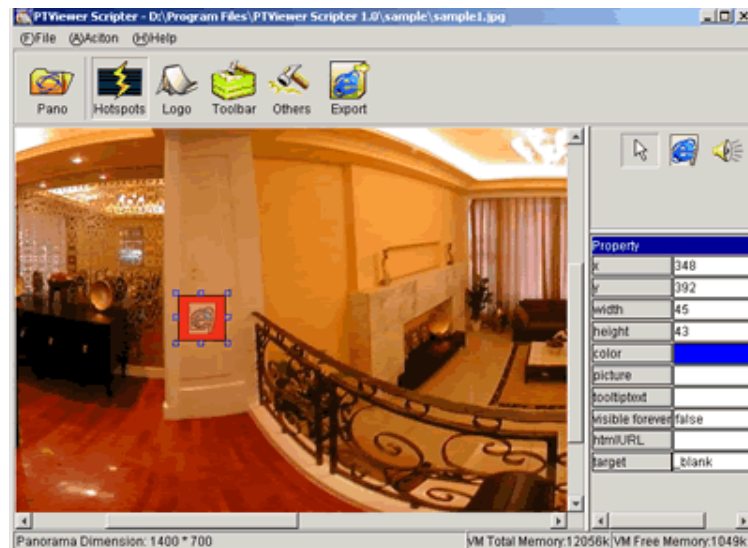
First of all, double click  in the desktop to launch PTViewer Scripter.




Click  in the toolbar or “Help->Open panorama image” in the menu, a dialog will show up, choose a panorama image as you wish and click “Open” to proceed.


3.2 Set hotspots on panorama image

Below window will appear after loading panorama successfully:

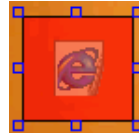



There are 3 buttons in this panel:




1.  : Button status switch button. Click this button first, and then click a hotspot in the main window to select a hotspot.


2.  : Add HTML hotspot button.

To add a HTML hotspot, click this button first and click or drag with your mouse at the place you want in panorama. Also you can move the position of the hotspot by drag the hotspot to somewhere else, or you can resize the

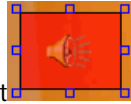


hotspot one side or corner of the hotspot . To change the properties of an HTML hotspot, click on the HTML hotspot first, and change the values in the property window.

Property		
x	439	x: x of upper left point in the selected hotspot
y	325	y: y of upper left point in the selected hotspot
width	59	width: width of the selected hotspot
height	56	height: height of the selected hotspot
color		color: color of the hotspot in viewer
picture		picture: image stand for the hotspot
tooltiptext		tooltiptext: hints of the hotspot
visible forever	false	visible forever: whether this hotspot is visible
htmlURL		htmlURL: select a image or input a URL
target	_blank	target: target of htmlURL, just like in HTML

3.  Add sound hotspot button


To add a sound hotspot, click this button first and click or drag with your mouse at the place you want in panorama. Also you can move the position of the hotspot by drag the hotspot to somewhere else, or you can resize the



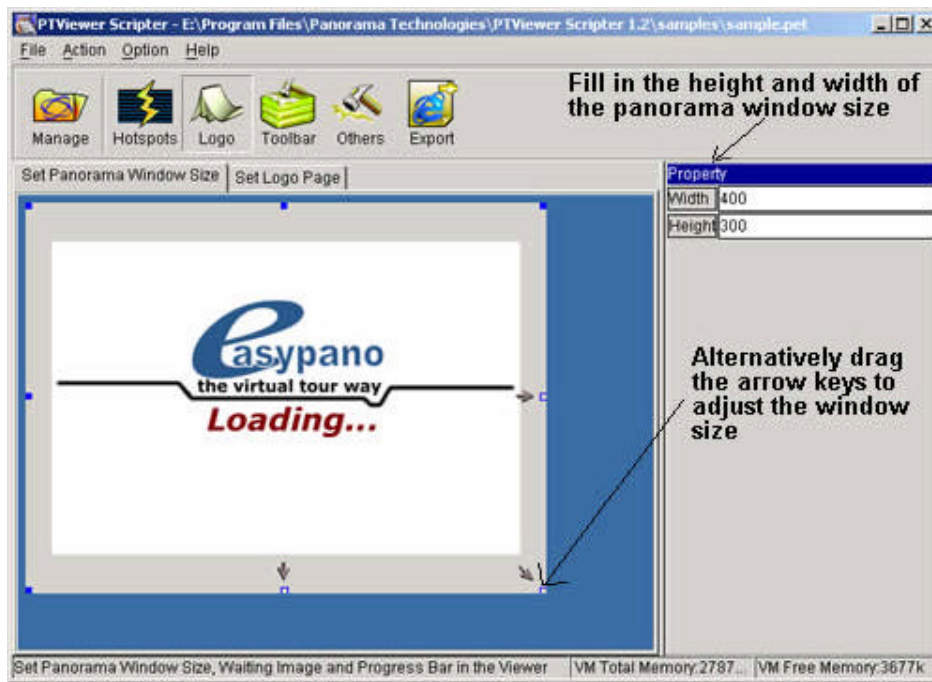
hotspot one side or corner of the hotspot. To change the properties of a sound hotspot is just like to change the properties of an HTML hotspot,

3.3 Set download waiting image in viewer

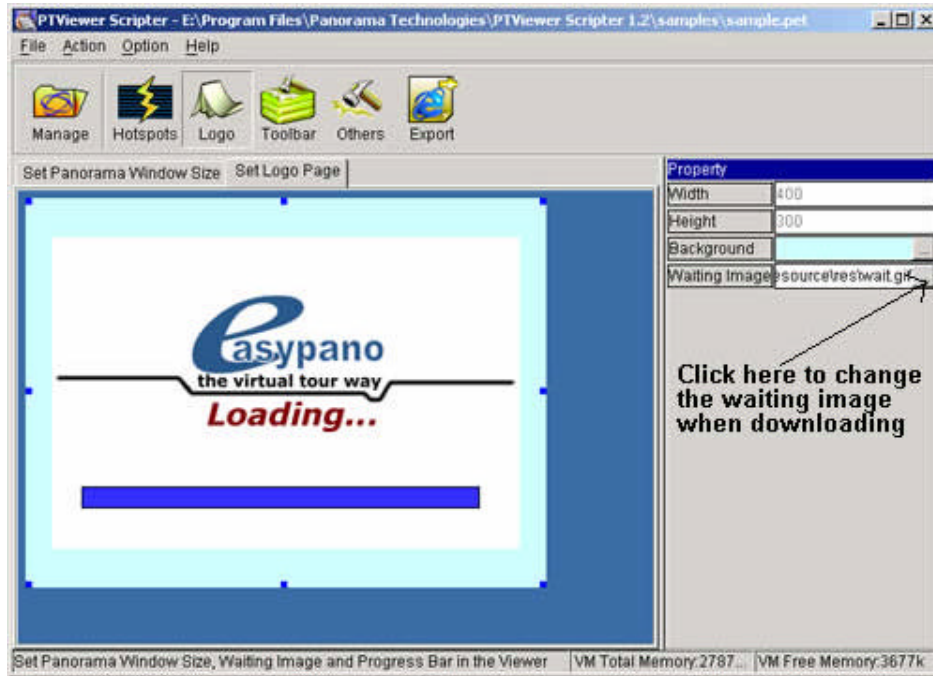


Please click  to begin set download waiting image. There are 3 steps to finish the logo setup.

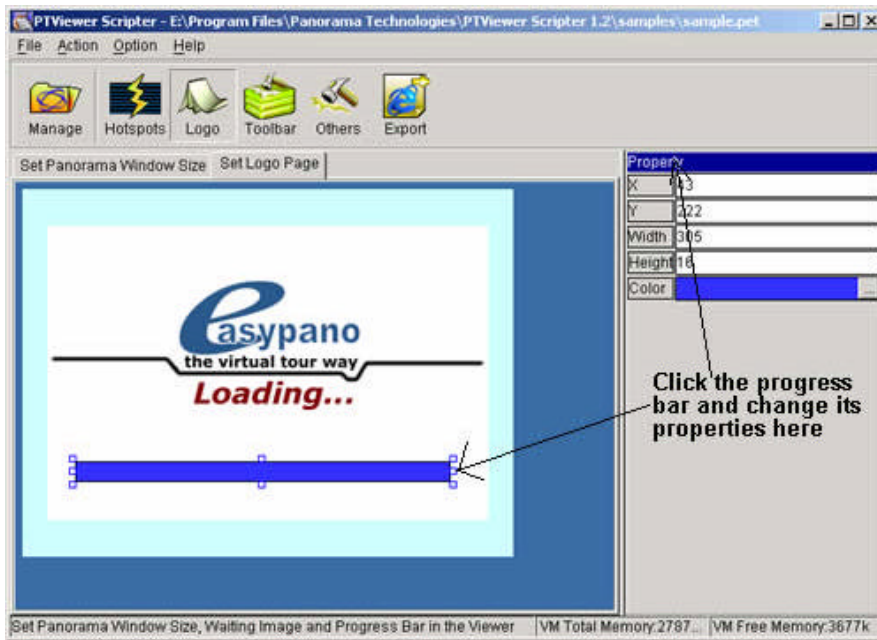
1. Click the "Set panorama window size" tab, fill in the width and height of the panorama window size to change the window size.



2. Click the "Set logo page" tab, choose the logo image to be the waiting image when downloading.



3. Change the properties of progress bar.



Properties of applet

	width: width of applet in HTML page
	height: height of applet in HTML page


Property		
width	320	width: width of applet in HTML page
height	240	height: height of applet in HTML page
background	...	background: select a background color
waiting image	.\resource\restwait. ...	waiting image: select a logo image as waiting image

Properties of Progress bar in viewer

Property		
x	40	x: x of upper left point in the selected progress bar
y	180	y: y of upper left point in the selected progress bar
width	240	width: width of the selected progress bar
height	16	height: height of the selected progress bar
color	...	color: color of the selected progress bar

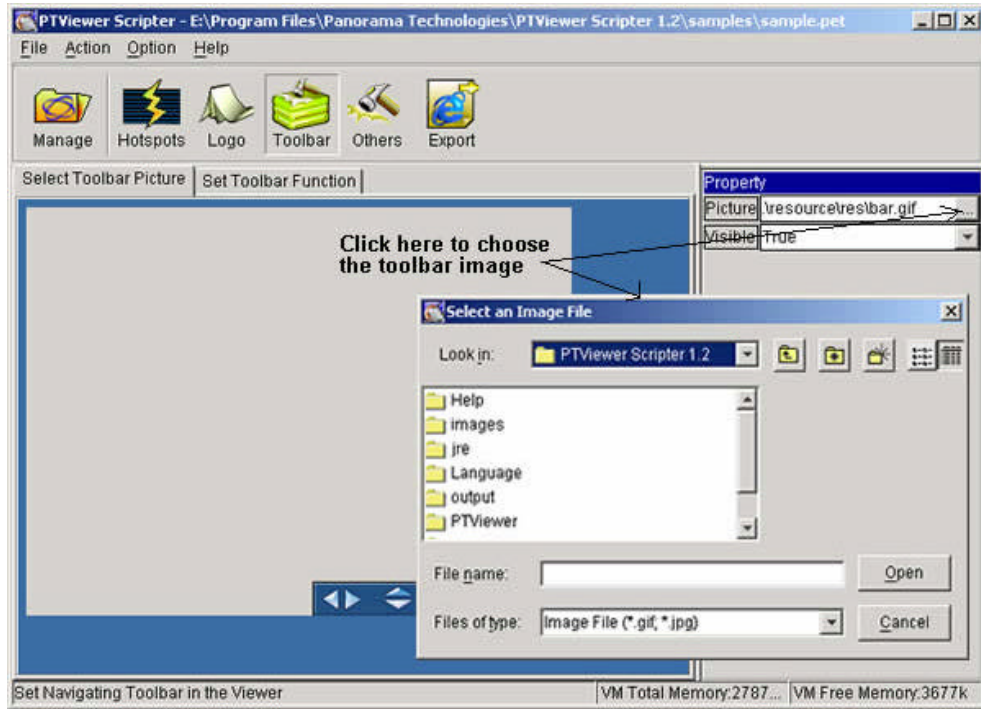
3.4 Set navigating toolbar in viewer



Click  to begin to set your style of navigating toolbar in viewer. There are two steps to accomplish the toolbar setting.

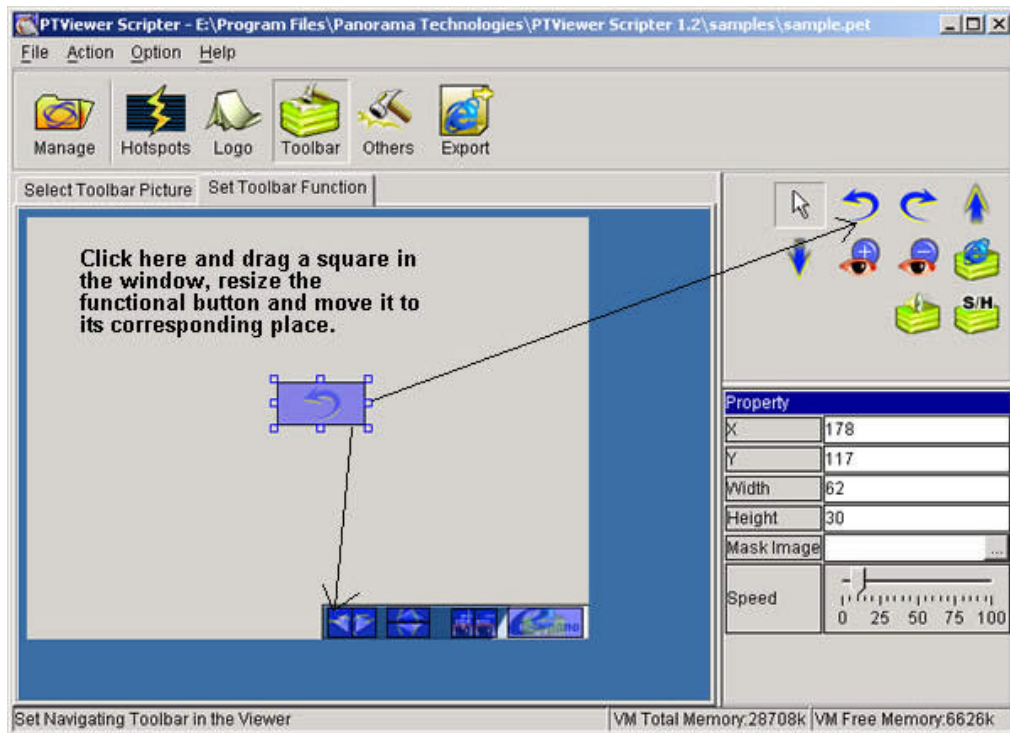
1. Choose the navigating toolbar image.

Click "Select toolbar picture" tab, and click the "Picture" in the property window, then a dialog will show up. Choose your toolbar image and click "Open" to finish.



2. Set the button functions in the toolbar.










Click "Set toolbar function" tab. Add functional buttons and move them to its corresponding positions in the toolbar image.



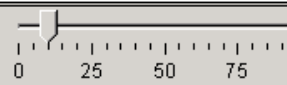


Button status switch button, just like the same button in "Adding hotspots to the panorama image" panel.


Functional buttons:

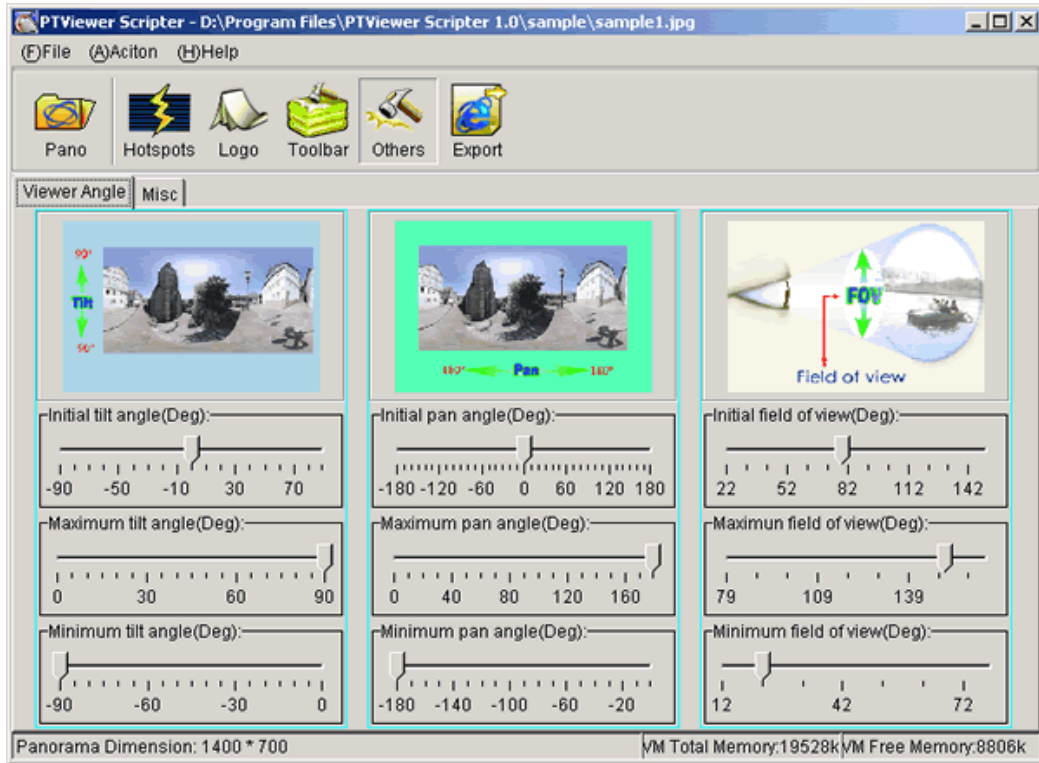
Functional buttons	Description
	Turning left button in navigating toolbar
	Turning right button in navigating toolbar
	Moving up button in navigating toolbar
	Moving down button in navigating toolbar
	Zooming in button in navigating toolbar
	Zooming out button in navigating toolbar
	Hyperlink button in navigating toolbar
	Playing sound button in navigating toolbar
	Hiding/showing hotspots toggle button in navigating toolbar

Take property window of "Turning left button" as an example:

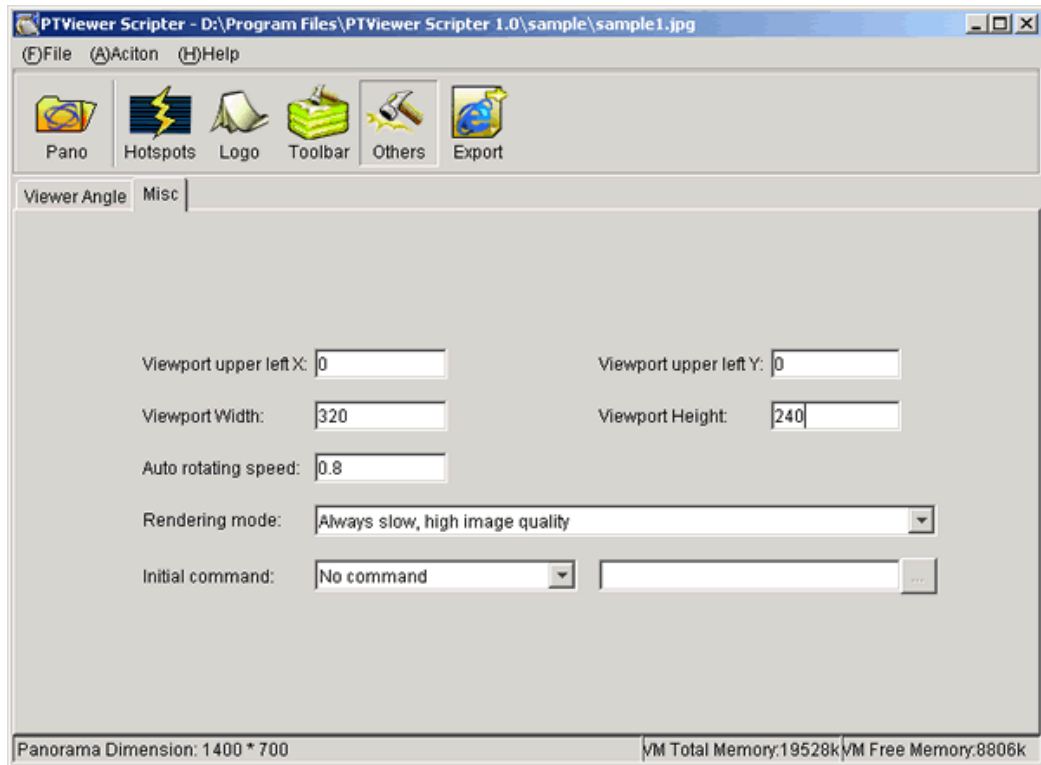
Property		
x	145	x: x of upper left point in the turning left button
y	215	y: y of upper left point in the turning left button
width	21	width: width of the turning left button
height	24	height: height of the turning left button
picture		picture: image stand for the turning left button in viewer
speed		speed: adjust the rotating speed when clicking turning left button

3.5 Set other options

Click  to set other options of the panorama. Adjust the sliders to adjust the angel settings.



Click the "Misc" tab to adjust all the rest options.



Viewport upper left X	X coordinate of the upper left point in viewport. Viewport is embedded in applet and it has the same size as the applet by default. Leave it unchanged if you do not know the meaning exacting
Viewport upper left Y	X coordinate of the upper left point in viewport, 0 by default
Width	Viewport width, identical to applet width by default
Height	Viewport Height, identical to applet width by default
Auto rotating speed	Auto rotating speed (degree/frame). Vary from -360 to 360. "0" stand for still panorama. 0.8 degree/frame by default.
Rendering mode	Select one from 4 rendering mode
Initial command	Initial command when applet is loading


3.6 Add sound file to virtual tour

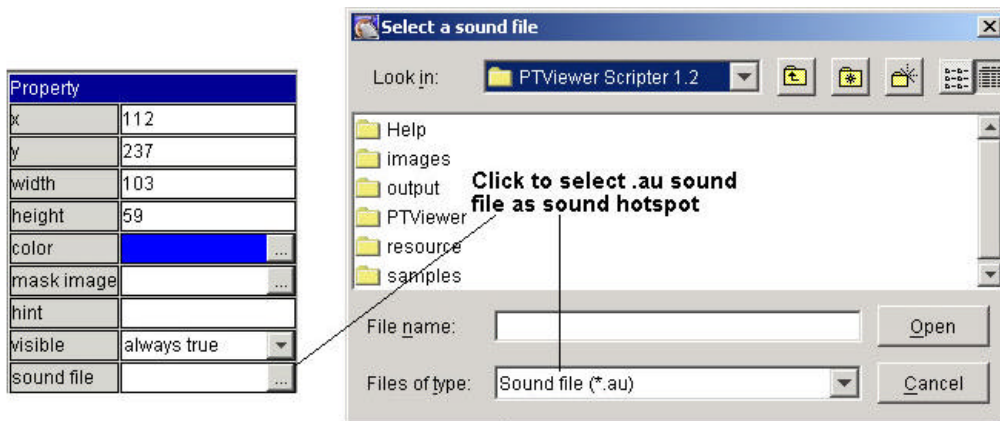
You may add sound hotspots or a background sound file to a virtual tour.

Adding sound hotspot, *.au format only can be used, while different types of format as *.mp3, *.wma, *.wav, *.mid, *.au can be used as background music.

- Add sound hotspot



Click  to add a sound hotspot. The adding hotspot process can be illustrated as below. "[Set hotspots on panorama image](#)" also gives the instruction.

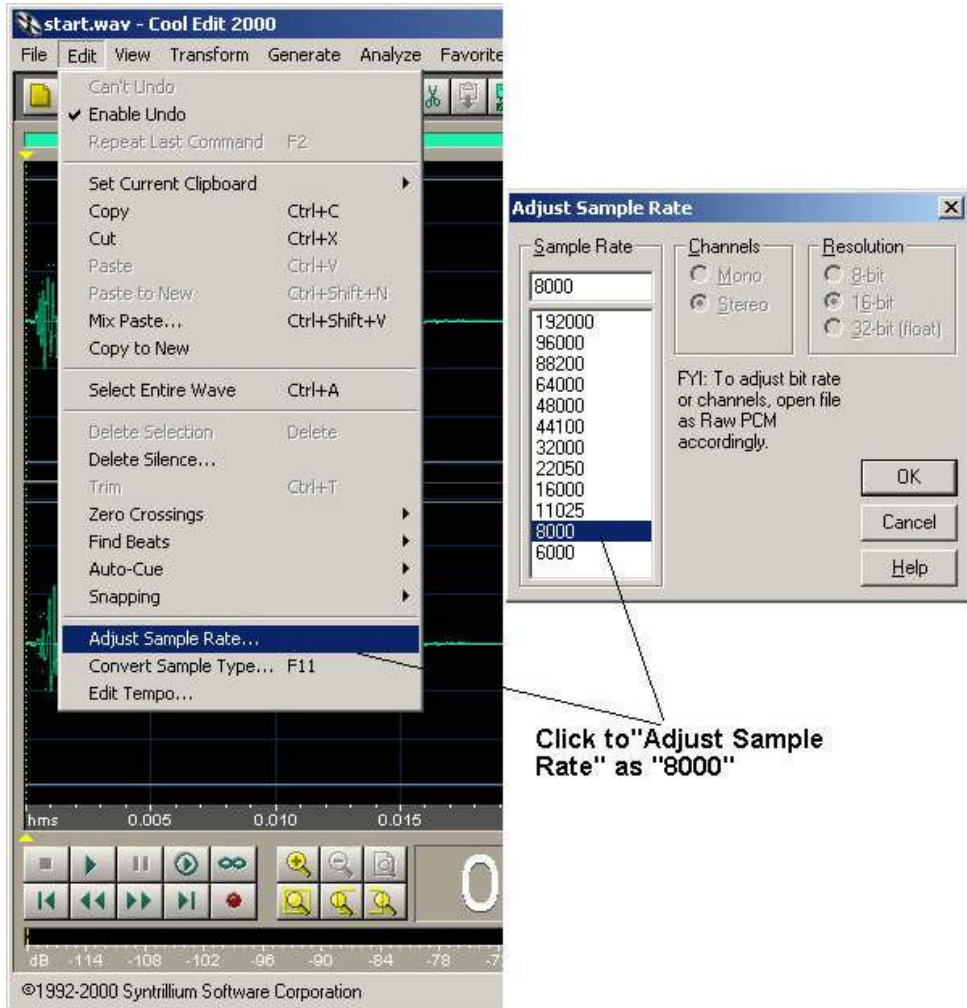


If you would like to use your own sound files as sound hotspot, you need to convert other sound formats to such kind of .au file. To do this, a converting tool is necessary. Cool Edit 2000, a shareware with the registration price at \$69, is recommended. Unregistered version provides one month's free trial. Cool Edit 2000 can be downloaded at:

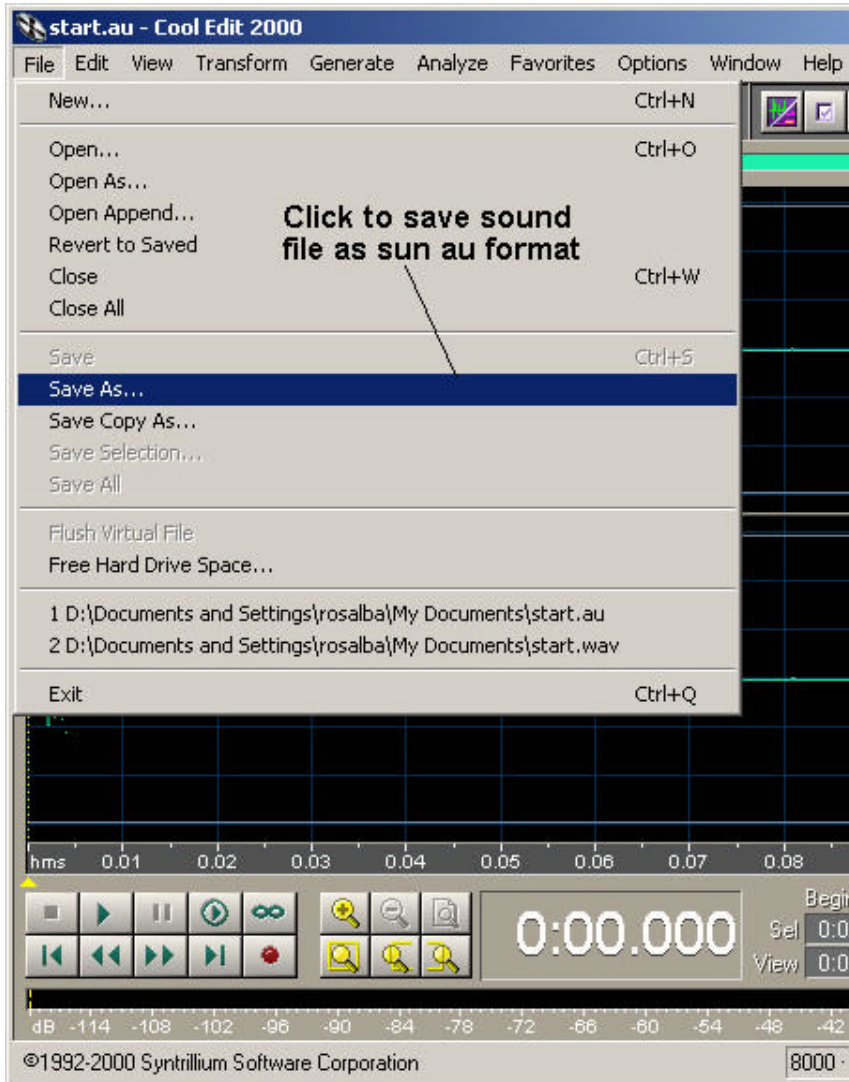
<http://www.syntrillium.com/download/download.html?1>

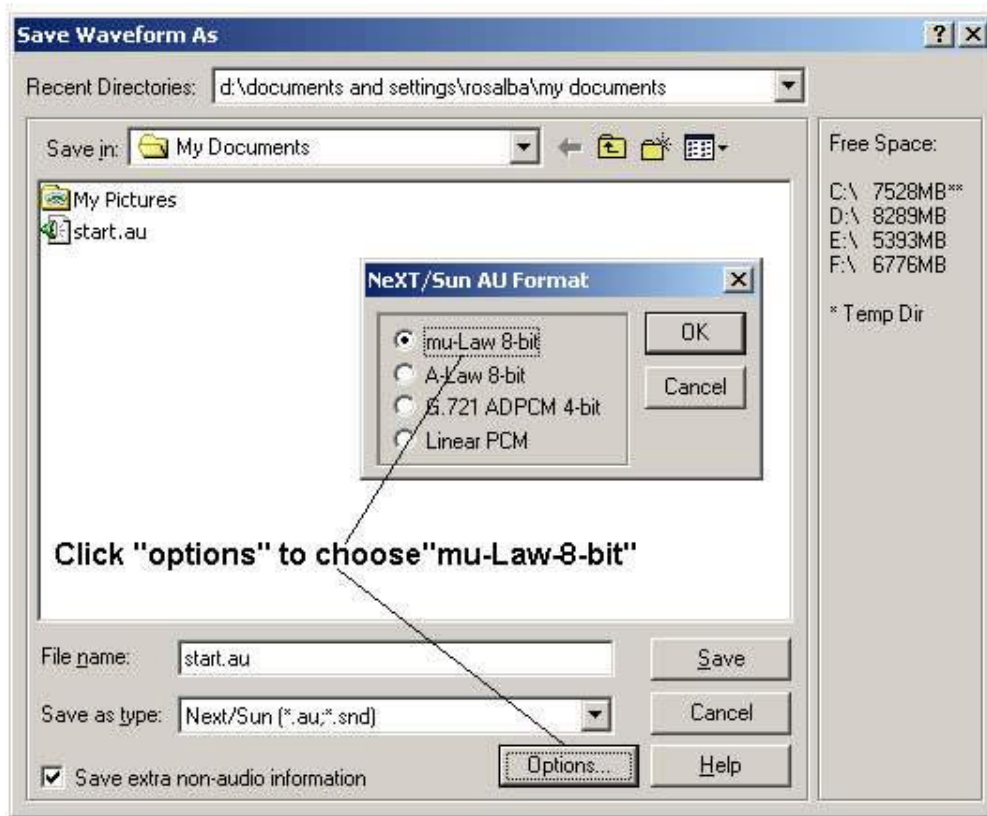
Please do as follows to undertake file format conversion.

- (1) Install Cool Edit 2000 in your computer;
- (2) Load your sound file in Cool Edit 2000;
- (3) Adjust Sample Rate as 8000;




(4) Save the sound file as sun au format and set mu-Law 8-bit.

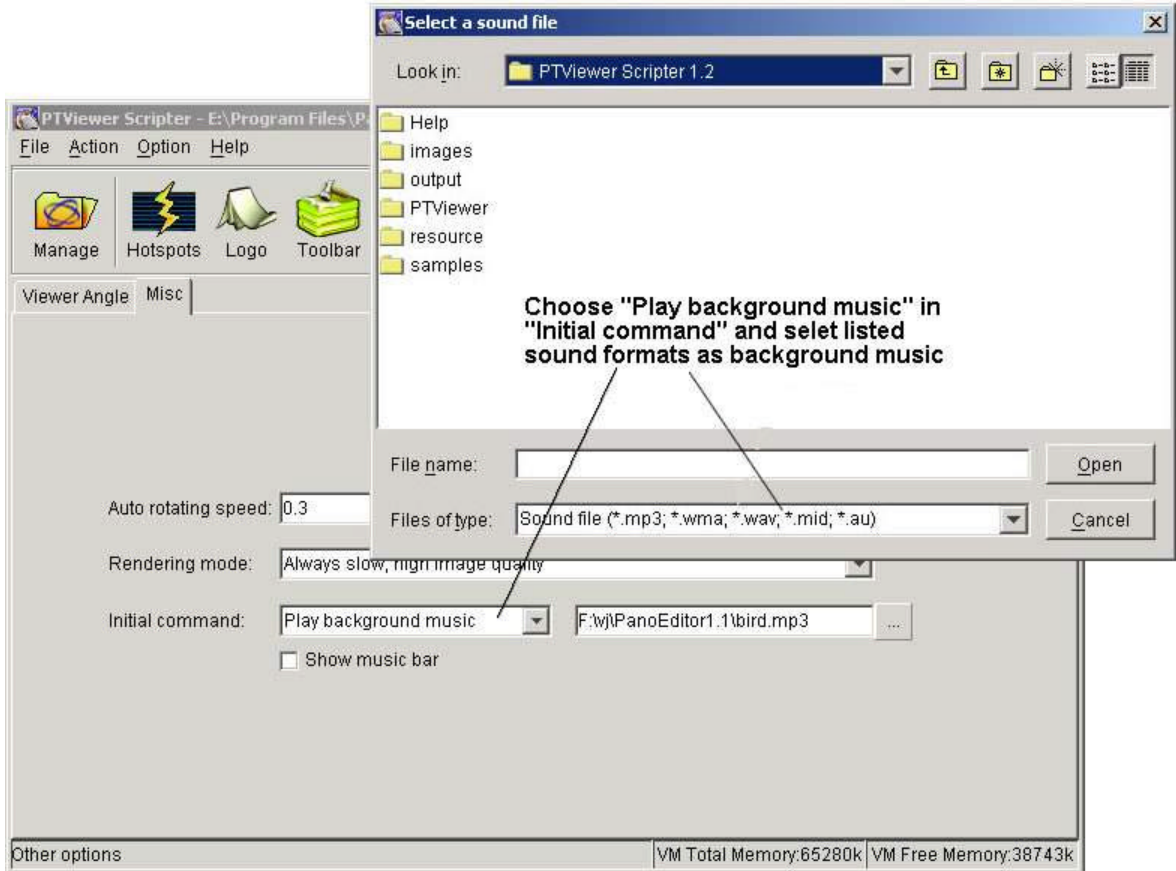




- Add Background Music


You can also play background music of different formats while opening a virtual

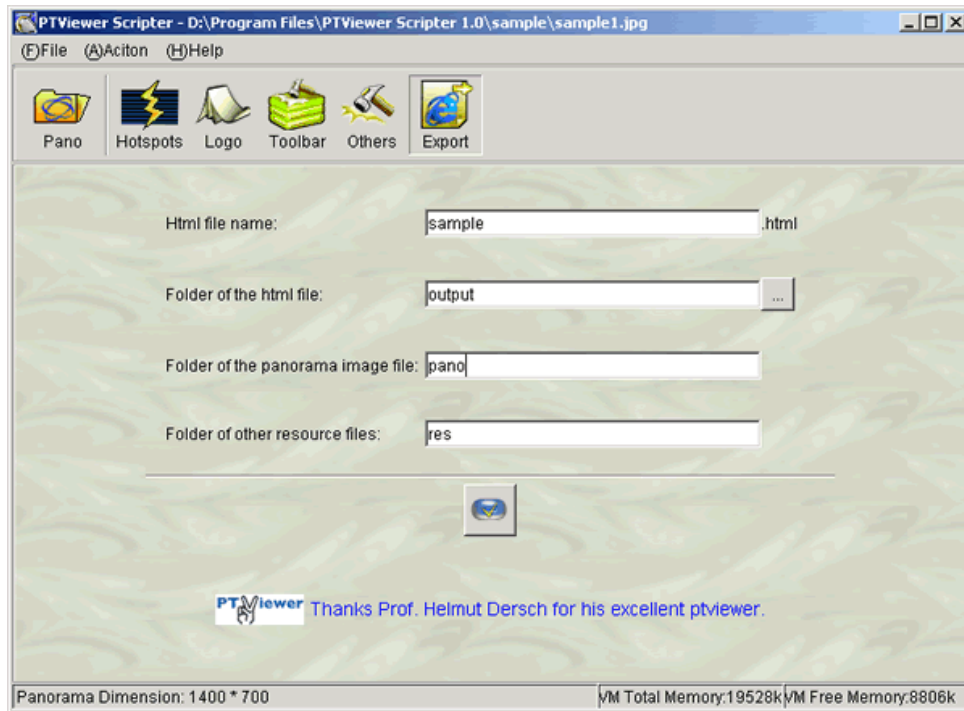
tour. Click  > Misc, then choose **Play background music** in **Initial command** and specify your favorite music. See below.




3.7 Export the result files



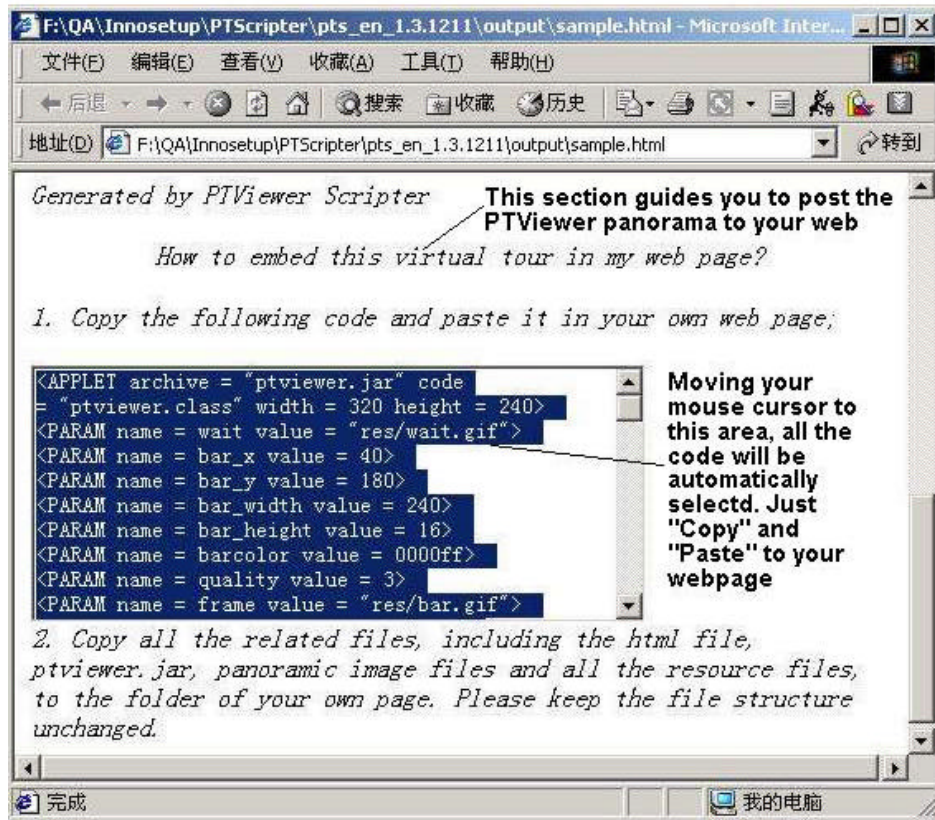
Click  to go to the "Export" panel.



Please specify the HTML file name, the folder of HTML file, the folder of
panorama image and the folder of other resource files, and then click  button to finish exporting. Please note that the folder of panorama image and the folder of other resource files are relative to the folder of HTML file.

3.8 Post virtual tour to web

To post Virtual Tour to web, the published html file gives you the instruction. Open it you can find the solution. Make sure to copy the related source file to your webpage directory and keep the file structure unchanged.



4 Troubleshooting and FAQ

General Concerns

What are PTViewer and PTViewer Scripiter?

"PTViewer " is a java applet panorama viewer embedded in web pages for viewing panoramas. PTViewer Scripiter is a complementary tool of PTViewer to allow the users of PTViewer to customize the viewer to their own style in a GUI (Graphical User Interface) and add hotspots on panoramas to create virtual tours visually.

What can I do with it?

Use your own logo and toolbar in the viewer to promote your own marketing and add hotspots on related panoramas to make virtual tours easily.

What is a panorama image?

A panorama image is an immersive image that places you in the middle of the scene. You can look anywhere: right, left, floor, ceiling, or zoom in or out of a scene. Panorama images can be embedded in Internet browsers.

Can PTViewer Scripiter work with cubic panorama?

No. PTViewer does not support cubic panorama well. PTViewer Scripiter only works with the spherical panorama published as PTViewer(*.jpg). More information in previous question " How can I make a virtual tour with the panoramas produced by Panoweaver? ".

How can I add sound file into virtual tour with PTViewer Scripter?

You may add sound hotspot or background sound file to Virtual Tour. Mp3, wave and au formats can be used as background sound file, whereas only au format can be used as hotspot sound file. Please refer to " Add Sound File to Virtual Tour" for more information.

Purchasing

What are the differences between free trial version and registered version?

You can use samples to have a full-featured test in trial version, but you cannot export the result files for your panoramas in this trial version. In the registered version, there is no limitation on exporting result files.

What happens after I send in the order?

You will receive an email confirming your order shortly after sending the online order form. Then, within 24 hours, you will receive a second email with your registration name, code, and instructions to get started!

What if my hard drive crashes and I can't find my license key and serial number?

Please email us at sales@easypano.com. Please include your name, address, email address, and order confirmation number (if you have it). We will be happy to help you.

Details & Tips

I have entered the license key , but I still can't register successfully- Why?

Please input both the license key and serial number we emailed to you. Since the license key is a little longer, please user Ctrl+C copy it in other editor and paste it in the form instead of entering it word by word.

I have more questions - whom should I write to?

Please send your additional questions to support@easypano.com.

5 Contact Technical Support

Before you contact technical support, have you:

- Read and followed the instructions provided in the users manual at http://www.easypano.com/download/pts_manual.pdf
- Visited the support column in <http://www.easypano.com> for updated troubleshooting information

You can reach technical support by one of the following methods:

Email: support@easypano.com

Web: <http://www.easypano.com>